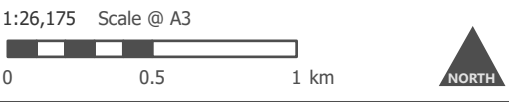


ERM

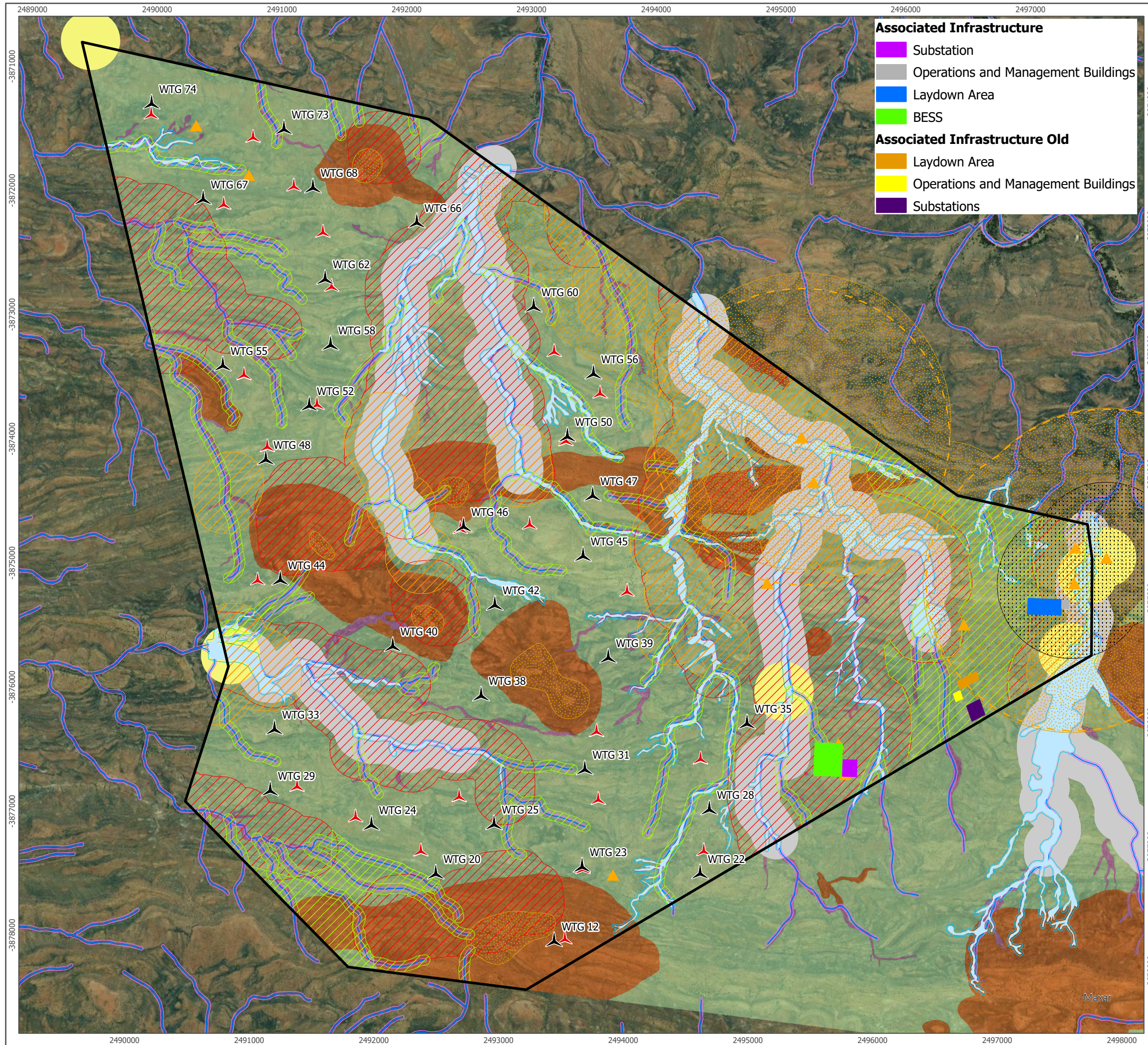
- Koups 2 WEF AOI
- Visual Sensitivities**
- Visual Sensitivity Grid
- Visual Sensitivity WEF
- Heritage Features
- Heritage features Buffers
- Bat Sensitivities**
- Bat Sensitivity - High
- Bat Sensitivity - High-Medium
- Bat Sensitivity - Medium
- Alluvial Drainage System**
- Alluvial Drainage System High
- Drainage System Buffer (10m)
- Drainage Line 150000 Buffer (10m)
- Drainage Line 150000
- Avifaunal Sensitivities**
- Drainage line
- Waterpoint
- Biodiversity Sensitivity**
- Drainage
- Plains
- Slopes



Produced By: KM	0670964-GIS-005
Checked By: LB	Date: 9/11/2024

Sensitivity Map
Figure 2.1

Koups WEF 2
EMPr



- Koup 2 WEF AOI
- Wind Turbines
- Wind Turbines (Old)
- Visual Sensitivities**
- Visual Sensitivity Grid
- Visual Sensitivity WEF
- Heritage Features
- Heritage features Buffers
- Bat Sensitivities**
- Bat Sensitivity - High
- Bat Sensitivity - High-Medium
- Bat Sensitivity - Medium
- Alluvial Drainage System**
- Alluvial Drainage System High
- Drainage System Buffer (10m)
- Drainage Line 150000 Buffer (10m)
- Drainage Line 150000
- Avifaunal Sensitivities**
- Drainage line
- Waterpoint
- Biodiversity Sensitivity**
- Drainage
- Plains
- Slopes

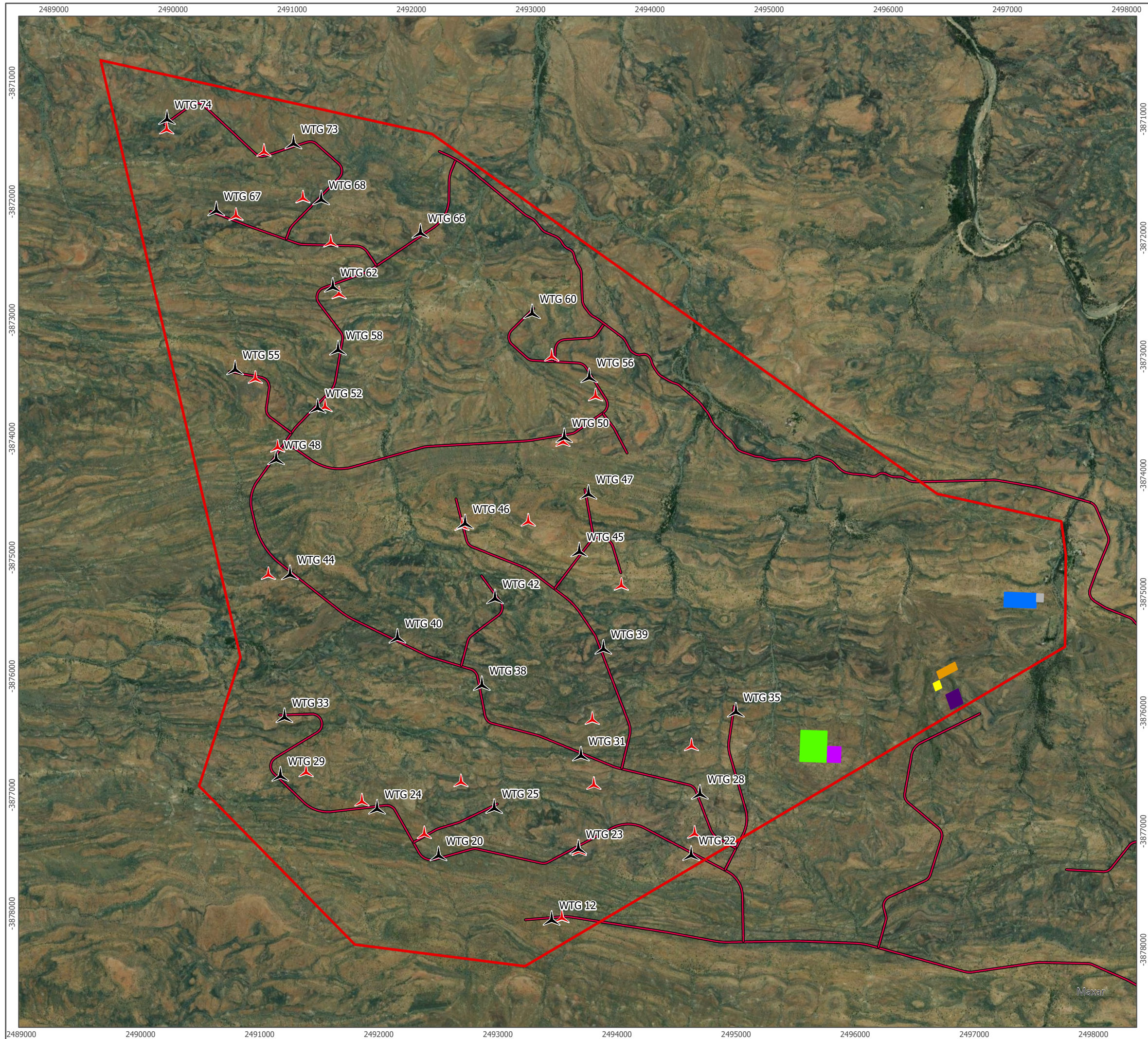
1:25,000 Scale @ A3

 0 0.45 0.9 km

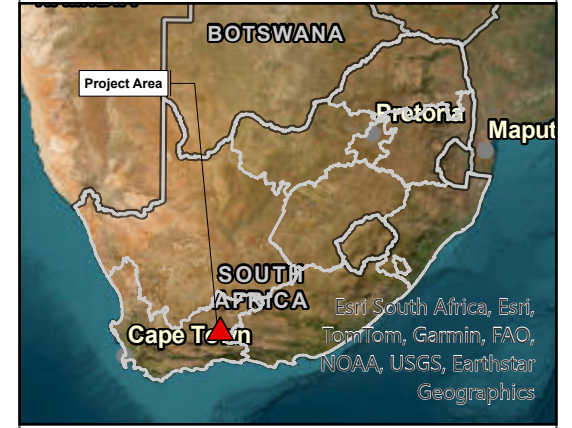
Produced By: KM	0670964-GIS-006
Checked By: LB	Date: 9/11/2024

Sensitivity Map
Figure 2.2

Koup WEF 2
EMPr



- Koup 2 WEF AOI
- Wind Turbines
- ▲ Wind Turbines (Old)
- Associated Infrastructure**
- Substation
- Operations and Management Buildings
- Laydown Area
- BESS
- Associated Infrastructure Old**
- Laydown Area
- Operations and Management Buildings
- Substations
- ~ Internal Wind Farm Roads



Produced By: KM	0670964-GIS-002
Checked By: LB	Date: 9/10/2024

Site layout Map
Figure 1

**Koup WEF 2
EMPr**