
Indigenous Engagement Services in Canada

Sustainability is our business





We believe building positive and respectful relationships with Indigenous Peoples is key to sustainable natural resource development.

ERM recognizes that socioeconomic and political matters are often the largest areas of risk and opportunity for a project. We collaborate with industry, Indigenous Peoples and organizations, government regulators, and co-management boards with the ultimate objective of supporting sustainable and inclusive development outcomes. Our reputation is built upon our ability to foster professional and productive relationships across all stakeholders and rights holders by recognizing that the true measure of sustainability is the creation of shared value.

ERM has extensive experience navigating the intricate cultural complexities surrounding natural resource development projects. We support our clients by designing and implementing engagement and consultation programs that meet regulatory requirements and are executed in a manner that respects the rights and interests of Indigenous communities. We have co-developed processes to understand and incorporate Indigenous expertise that is shared by knowledge holders, and we approach each project with our clients as an opportunity to support reconciliation through actions such as capacity building programs and community-based monitoring.

In Canada, our diverse team comprises over 30 dedicated social performance practitioners with cross-country experience. We collaborate closely with our colleagues with expertise in regulatory affairs, cultural heritage, biology, and water management. In addition to our work in Canada, our team supports projects around the world, where we set leading practices to establish and build relationships throughout their life cycles.

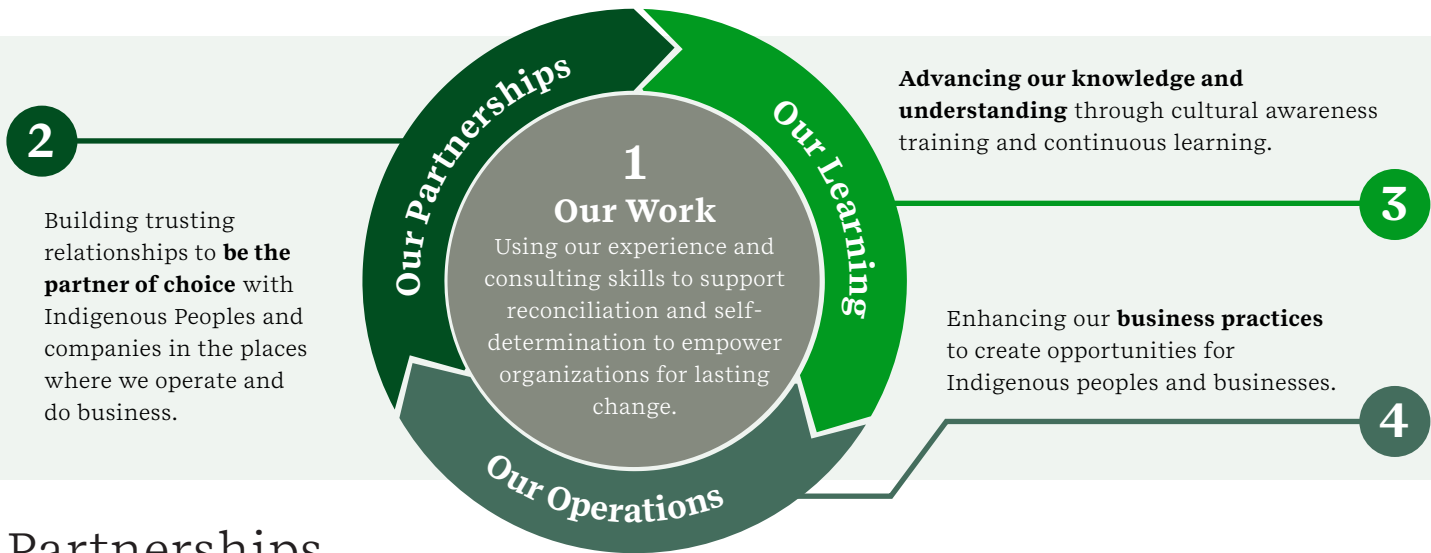
ERM provides a variety of Indigenous engagement services that meets the needs of the present without compromising the future.



ERM's Commitment to Indigenous Peoples

We commit to collaborating and partnering with our clients, Indigenous Peoples, and businesses to pursue a common vision for environmental stewardship and sustainable prosperity. Our commitment is rooted in the recognition of the importance of the United Nations Declaration on the Rights of Indigenous Peoples and the commitments that governments and the private sector have made to protecting and respecting the rights of Indigenous Peoples.

ERM's commitment is demonstrated through our four pillars.



Partnerships

ERM has a long history of working with Indigenous Peoples throughout Canada and internationally. We actively pursue working partnerships with Inuit, Métis, and First Nations when supporting capital projects in Canada, and we are working towards certification through the Progressive Aboriginal Relations (PAR) program. Our experience has been that this approach provides benefits to local communities, results in co-benefits to the project, and gives communities an opportunity to learn about industrial project planning and development that is occurring on their territories. Examples of our partnerships include the following:



Tahltan ERM Environmental Management (TEEM)

TEEM is a joint venture partnership (51%/49%) between the Tahltan Nation Development Corporation and ERM Consultants Canada Ltd. TEEM was established in 2004 to blend western scientific knowledge and Tahltan knowledge in the provision of environmental and related management services within the Tahltan Territory.



First Peoples Group (FPG)

ERM* has built a formal partnership with FPG, an Indigenous advisory firm dedicated to building a better Canada for all. FPG is a team of senior, respected First Nations, Inuit, and Métis consultants across Canada with its head office in Ottawa. ERM collaborates with FPG to advance reconciliation and sustainability across Canada.



Aglu Consulting and Training Inc.

ERM* is a long-time partner with Aglu Consulting and Training in Nunavut. Aglu is a majority Inuit-owned and Nunavut-based business with its head office in Rankin Inlet. Aglu provides on-the-ground support for community-based interviews, surveys and engagement, translation and design services.

*ERM acquired Stratos in 2021

Key Staff



Nicole Aitken
Area Manager, Partner
 Capital Project Development Strategic Communications & Engagement Project, Risk and Change Management



Nathan Braun
Partner
 Indigenous Engagement, Regulatory Strategy & Implementation



Wade Brunham
Partner
 Impact Assessment and Sustainable Natural Resource Development, Indigenous Partnerships, Collaboration and Capacity Building



Emily Caddell
Senior Consultant
 Indigenous Engagement, Self-determination & Reconciliation, Strategy, Governance, Strategic Engagement and Facilitation



Zoe Mullard
Associate Partner
 Indigenous Engagement, Social Impact Assessment, Social Performance Auditing



Anna Sundby
Partner
 Indigenous Engagement, Social Risk Assessment, Social Impact Assessment



Michael van Aanhout
Partner
 Indigenous Partnerships, Self-determination & Reconciliation, Strategy, Governance, Risk Management, Strategic Engagement and Facilitation



Stuart Van Bibber
Partner
 Impact Assessment, Indigenous Engagement & Partnerships, Construction Monitoring



Vicky Weekes
Associate Partner
 Self-determination & Reconciliation, Multi-Party Engagement & Strategy, Organizational Effectiveness

For more information, contact your current ERM consultant or any of our experts:

Anna Sundby
 Partner
anna.sundby@erm.com

Nathan Braun
 Partner
nathan.braun@erm.com

Michael van Aanhout
 Partner
michael.vanaanhout@erm.com

