

Grid Co-ordinates	Type	Start End	Longitude	Latitude
1	Preferred	Start Position	030° 05.86208724' E	26° 37.10018358' S
2	Preferred	End Position	030° 16.66143468' E	26° 36.62804796' S
3	Alternative 1	Start Position	030° 04.17661800' E	26° 38.73284094' S
4	Alternative 1	End Position	030° 16.66143468' E	26° 36.62804796' S
5	Alternative 2	Start Position	030° 04.17510570' E	26° 38.73134244' S
6	Alternative 2	End Position	030° 16.66164720' E	26° 36.62814888' S
7	Alternative 3	Start Position	030° 05.87309778' E	26° 37.01080962' S
8	Alternative 3	End Position	030° 16.70561718' E	26° 36.58536864' S

Site Boundary Vertices	Longitude	Latitude
1	030° 16' 20.47551240" E	26° 33' 03.48147720" S
2	030° 18' 26.02742760" E	26° 33' 43.36863120" S
3	030° 17' 59.81173800" E	26° 37' 21.13517280" S
4	030° 16' 18.49725480" E	26° 39' 40.74533280" S
5	030° 14' 53.11497840" E	26° 41' 14.38616760" S
6	030° 13' 46.54500240" E	26° 40' 14.89610640" S
7	030° 13' 28.24917600" E	26° 38' 58.50251520" S
8	030° 14' 56.86859400" E	26° 35' 56.51704320" S



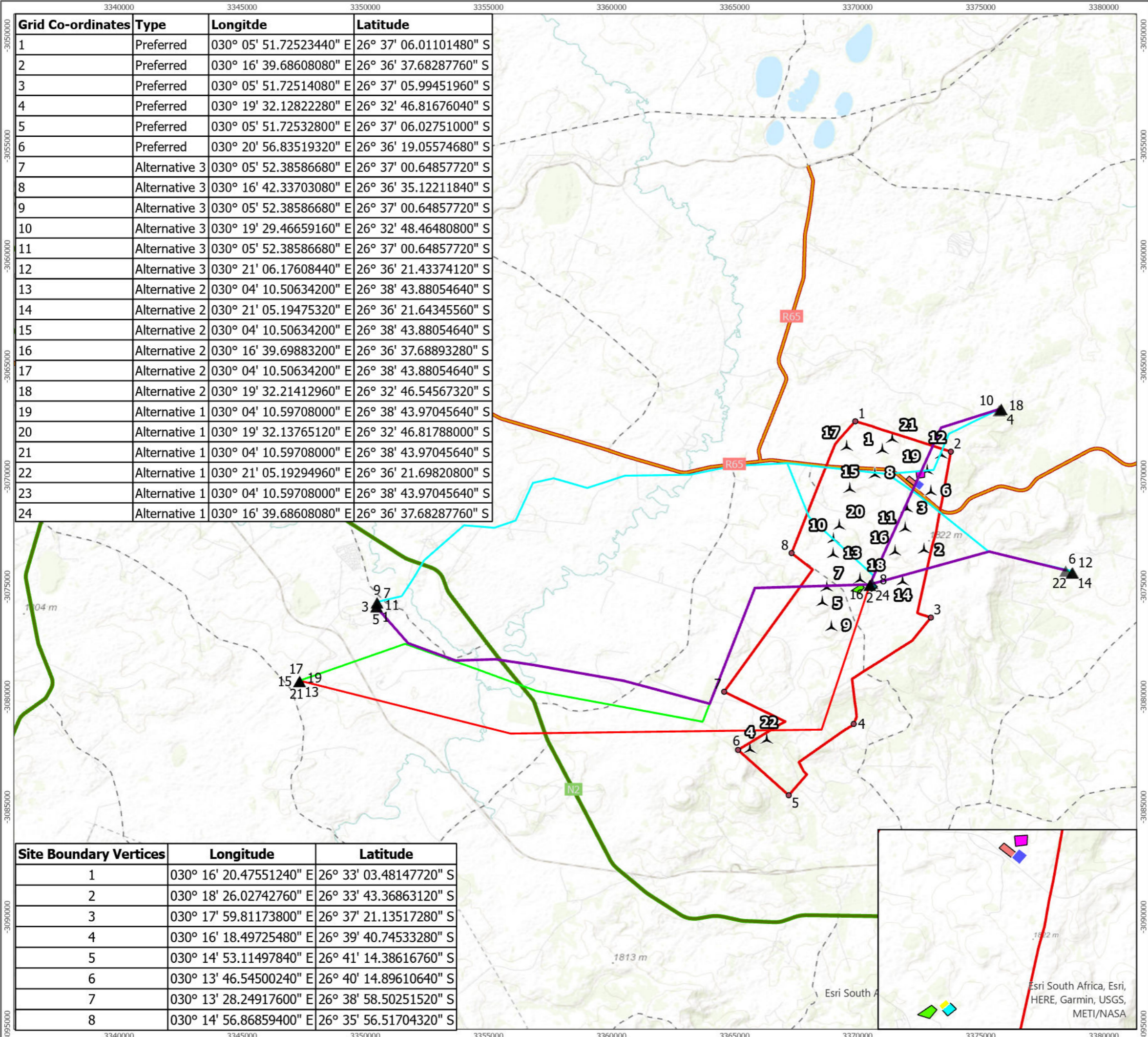
- Sheepmoor WEF Infrastructure**
- Turbine Locations
 - Sheepmoor WEF Boundary
 - Site Boundary Vertices
 - Grid Co-ordinates
- Associated Infrastructure**
- Substation (Preferred)
 - Substation (Alternative)
 - Laydown Area (Preferred)
 - Laydown Area (Alternative)
 - O&M Buildings (Alternative)
 - O&M Buildings (Preferred)
- Grid Connection Options**
- Alternative 1 Grid Connection
 - Alternative 2 Grid Connection
 - Alternative 3 Grid Connection
 - Preferred Grid Connection
- Public Roads**
- National Road
 - Arterial Road
 - Secondary Road



Produced By: KM Ref: 0684401-GIS-015
 Checked By: AA Date: 6/9/2024

Site Locality Map with Co-ordinates
 Figure 1-2

Sheepmoor WEF Scoping Report



Grid Co-ordinates	Type	Longitude	Latitude
1	Preferred	030° 05' 51.72523440" E	26° 37' 06.01101480" S
2	Preferred	030° 16' 39.68608080" E	26° 36' 37.68287760" S
3	Preferred	030° 05' 51.72514080" E	26° 37' 05.99451960" S
4	Preferred	030° 19' 32.12822280" E	26° 32' 46.81676040" S
5	Preferred	030° 05' 51.72532800" E	26° 37' 06.02751000" S
6	Preferred	030° 20' 56.83519320" E	26° 36' 19.05574680" S
7	Alternative 3	030° 05' 52.38586680" E	26° 37' 00.64857720" S
8	Alternative 3	030° 16' 42.33703080" E	26° 36' 35.12211840" S
9	Alternative 3	030° 05' 52.38586680" E	26° 37' 00.64857720" S
10	Alternative 3	030° 19' 29.46659160" E	26° 32' 48.46480800" S
11	Alternative 3	030° 05' 52.38586680" E	26° 37' 00.64857720" S
12	Alternative 3	030° 21' 06.17608440" E	26° 36' 21.43374120" S
13	Alternative 2	030° 04' 10.50634200" E	26° 38' 43.88054640" S
14	Alternative 2	030° 21' 05.19475320" E	26° 36' 21.64345560" S
15	Alternative 2	030° 04' 10.50634200" E	26° 38' 43.88054640" S
16	Alternative 2	030° 16' 39.69883200" E	26° 36' 37.68893280" S
17	Alternative 2	030° 04' 10.50634200" E	26° 38' 43.88054640" S
18	Alternative 2	030° 19' 32.21412960" E	26° 32' 46.54567320" S
19	Alternative 1	030° 04' 10.59708000" E	26° 38' 43.97045640" S
20	Alternative 1	030° 19' 32.13765120" E	26° 32' 46.81788000" S
21	Alternative 1	030° 04' 10.59708000" E	26° 38' 43.97045640" S
22	Alternative 1	030° 21' 05.19294960" E	26° 36' 21.69820800" S
23	Alternative 1	030° 04' 10.59708000" E	26° 38' 43.97045640" S
24	Alternative 1	030° 16' 39.68608080" E	26° 36' 37.68287760" S

Site Boundary Vertices	Longitude	Latitude
1	030° 16' 20.47551240" E	26° 33' 03.48147720" S
2	030° 18' 26.02742760" E	26° 33' 43.36863120" S
3	030° 17' 59.81173800" E	26° 37' 21.13517280" S
4	030° 16' 18.49725480" E	26° 39' 40.74533280" S
5	030° 14' 53.11497840" E	26° 41' 14.38616760" S
6	030° 13' 46.54500240" E	26° 40' 14.89610640" S
7	030° 13' 28.24917600" E	26° 38' 58.50251520" S
8	030° 14' 56.86859400" E	26° 35' 56.51704320" S

Sheepmoor WEF Infrastructure

- Turbine Locations
- Amsterdam WEF Boundary (Sheepmoor)
- Grid Co-ordinates
- Site Boundary Vertices

Associated Infrastructure

- Substation (Preferred)
- Substation (Alternative)
- Laydown Area (Preferred)
- Laydown Area (Alternative)
- O&M Buildings (Alternative)
- O&M Buildings (Preferred)

Grid Connection Options

- Preferred Grid Connection
- Alternative 3 Grid Connection
- Alternative 1 Grid Connection
- Alternative 2 Grid Connection

Public Roads

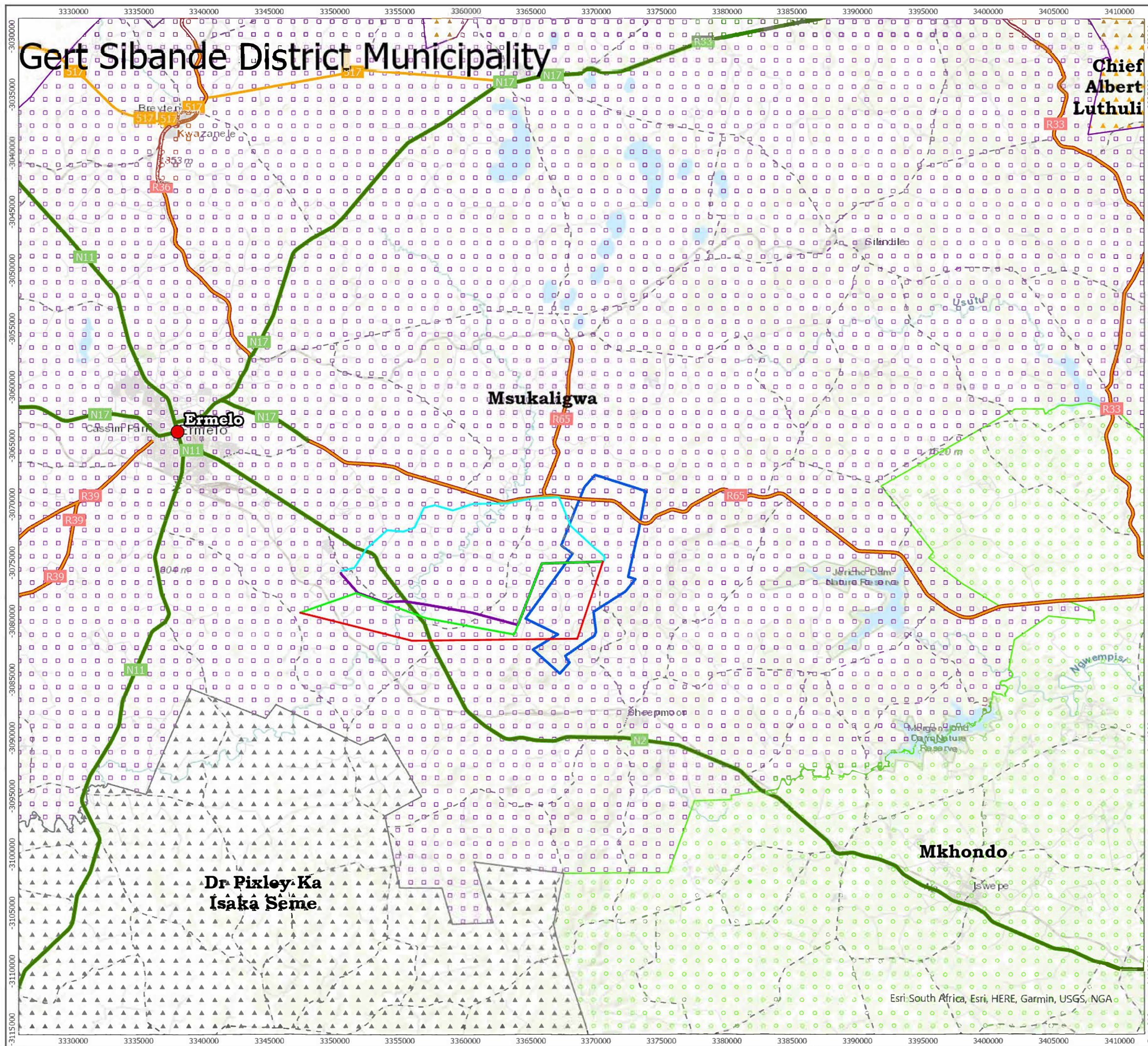
- National Road
- Arterial Road
- Secondary Road
- On/Off Ramp or Slipway



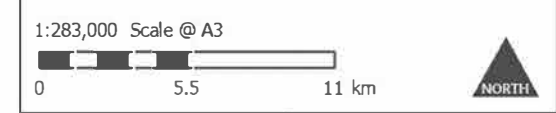
Produced By: KM	Ref: 0684401-GIS-015
Checked By: AA	Date: 11/22/2023

Site Locality Map
Figure 2

G:\SA-GIS\Environment\0684401 Mullilo WEFs\0684401 Mullilo WEFs.aprx\0684401-GIS-015 Fig 1 Sheepmoor WEF Site Locality Map



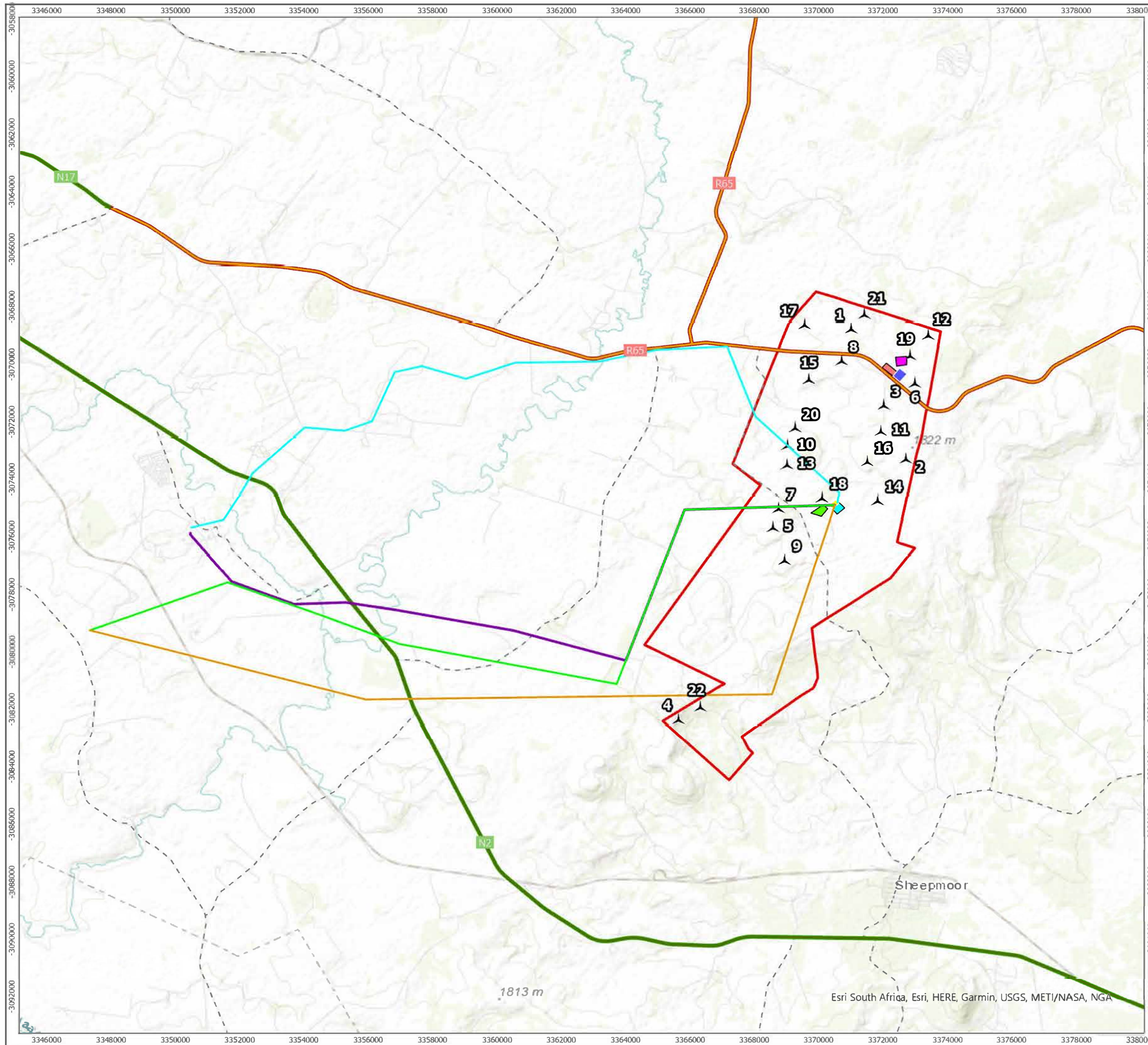
- Ermelo Town
- Sheepmoor WEF Boundary
- Grid Connection Options**
- Preferred Grid Connection
- Alternative 1 Grid Connection
- Alternative 2 Grid Connection
- Alternative 3 Grid Connection
- Local Municipalities**
- Chief Albert Luthuli
- Dr Pixley Ka Isaka Seme
- Mkhondo
- Msukaligwa
- Public Roads**
- National Freeway
- National Road
- Arterial Road
- Main Road
- Secondary Road
- On/Off Ramp or Slipway



Produced By: KM	Ref: 0684401-GIS-016
Checked By: AA	Date: 6/9/2024

**Site Locality
Map Figure 1-1**

**Sheepmoor WEF
Scoping Report**



ERM

Sheepmoor WEF Infrastructure

▲ Turbine Locations

▭ Sheepmoor WEF Boundary

Associated Infrastructure

▭ Substation (Preferred)

▭ Substation (Alternative)

▭ Laydown Area (Preferred)

▭ Laydown Area (Alternative)

▭ O&M Buildings (Alternative)

▭ O&M Buildings (Preferred)

Grid Connection Options

— Preferred Grid Connection

— Alternative 1 Grid Connection

— Alternative 2 Grid Connection

— Alternative 3 Grid Connection

Public Roads

— National Road

— Arterial Road

- - - Secondary Road

1:115,000 Scale @ A3



Produced By: KM

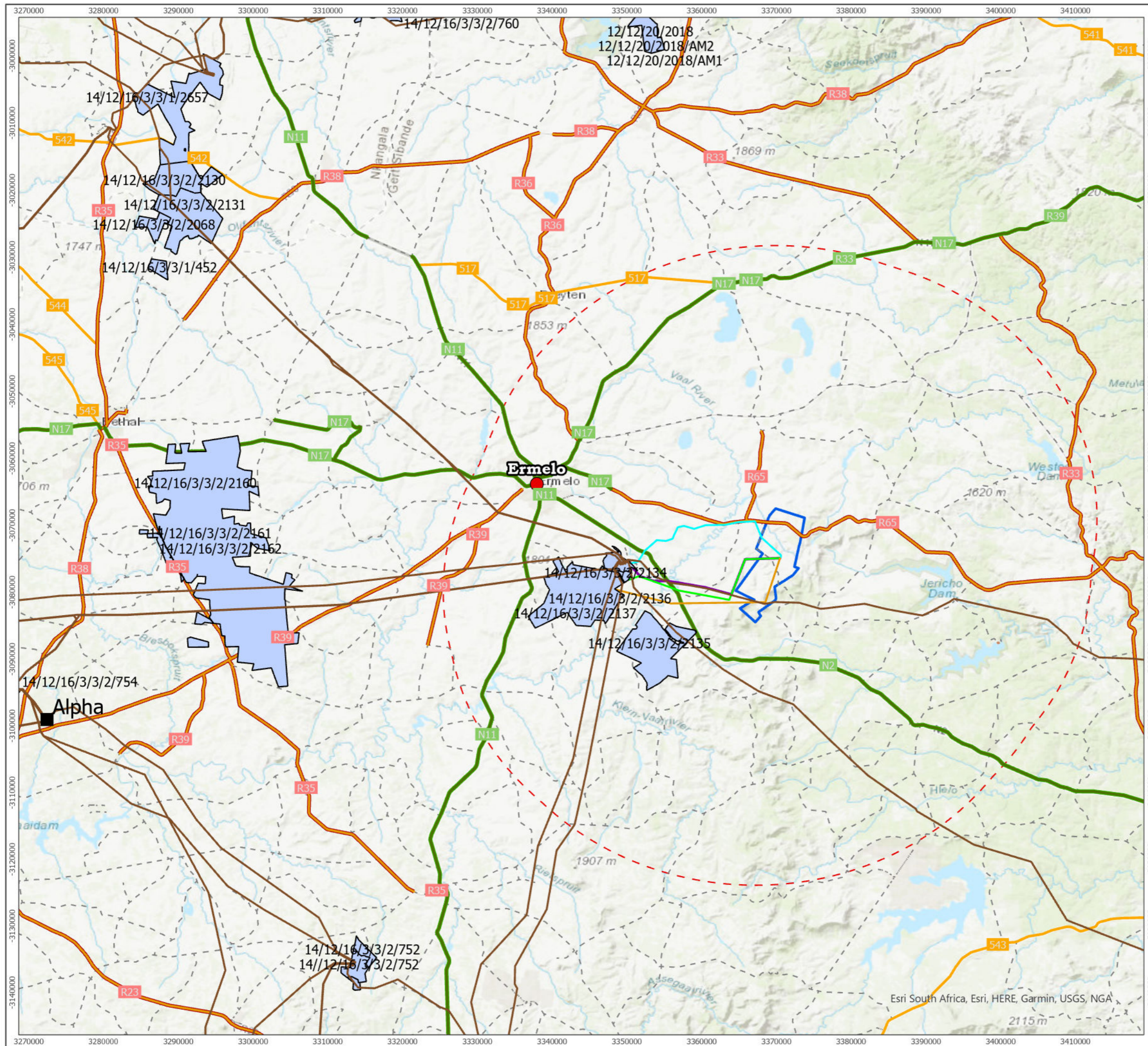
Ref: 0684401-GIS-017

Checked By: AA

Date: 6/9/2024

Preferred Site Development Plan
Figure 1-2

Sheepmoor WEF Scoping Report



ERM

- Ermelo Town
- Sheepmoor WEF Boundary
- 35km Buffer of Amsterdam WEF Boundary (Sheepmoor)
- Renewable Energy EIA Applications (2023 Q4)
- Grid Connection Options**
- Preferred Grid Connection
- Alternative 1 Grid Connection
- Alternative 2 Grid Connection
- Alternative 3 Grid Connection
- Existing Eskom Infrastructure**
- Main Transmission Substation
- Grid Connections
- Public Roads**
- National Road
- Arterial Road
- Main Road
- Secondary Road
- On/Off Ramp or Slipway

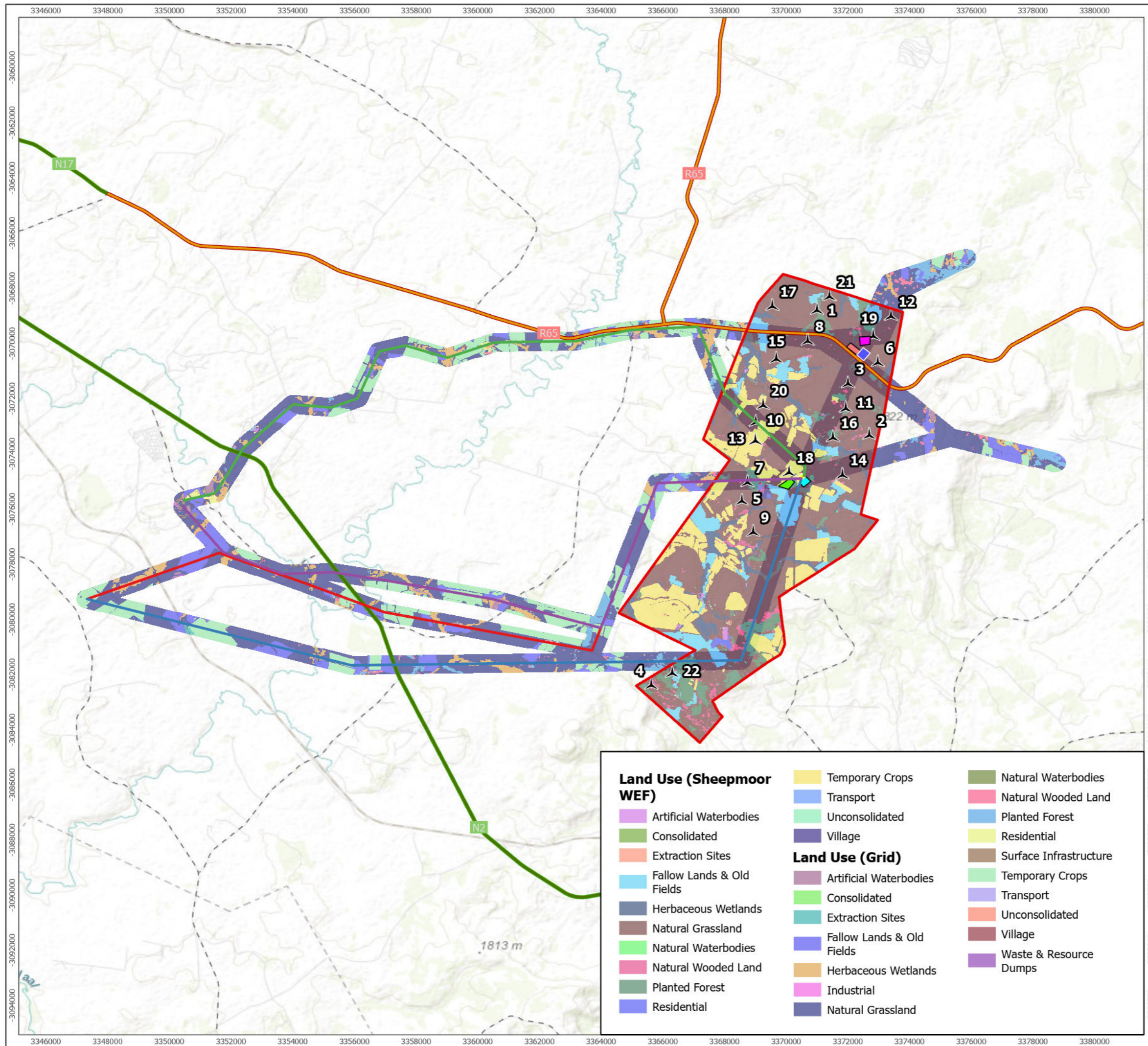


Produced By: KM	Ref: 0684401-GIS-018
Checked By: AA	Date: 6/9/2024

Renewable Energy Projects within 35km radius
Figure 4

Sheepmoor WEF Scoping Report

G:\SA-GIS\Environment\0684401 Mullilo WEFs\0684401 Mullilo WEFs.aprx\0684401-GIS-018 Fig 4 Sheepmoor WEF Renewable Energy Projects within 35 km radius



ERM

Sheepmoor WEF Infrastructure

- ▲ Turbine Locations
- ▭ Sheepmoor WEF Boundary

Associated Infrastructure Locations

- ▭ Substation (Preferred)
- ▭ Substation (Alternative)
- ▭ O&M Buildings (Preferred)
- ▭ O&M Buildings (Alternative)
- ▭ Laydown Area (Alternative)
- ▭ Laydown Area (Preferred)

Grid Connection Options

- Alternative 1 Grid Connection
- Alternative 2 Grid Connection
- Alternative 3 Grid Connection
- Preferred Grid Connection

Public Roads

- National Road
- Arterial Road
- - - Secondary Road

Land Use (Sheepmoor WEF)

- ▭ Artificial Waterbodies
- ▭ Consolidated
- ▭ Extraction Sites
- ▭ Fallow Lands & Old Fields
- ▭ Herbaceous Wetlands
- ▭ Natural Grassland
- ▭ Natural Waterbodies
- ▭ Natural Wooded Land
- ▭ Planted Forest
- ▭ Residential

Land Use (Grid)

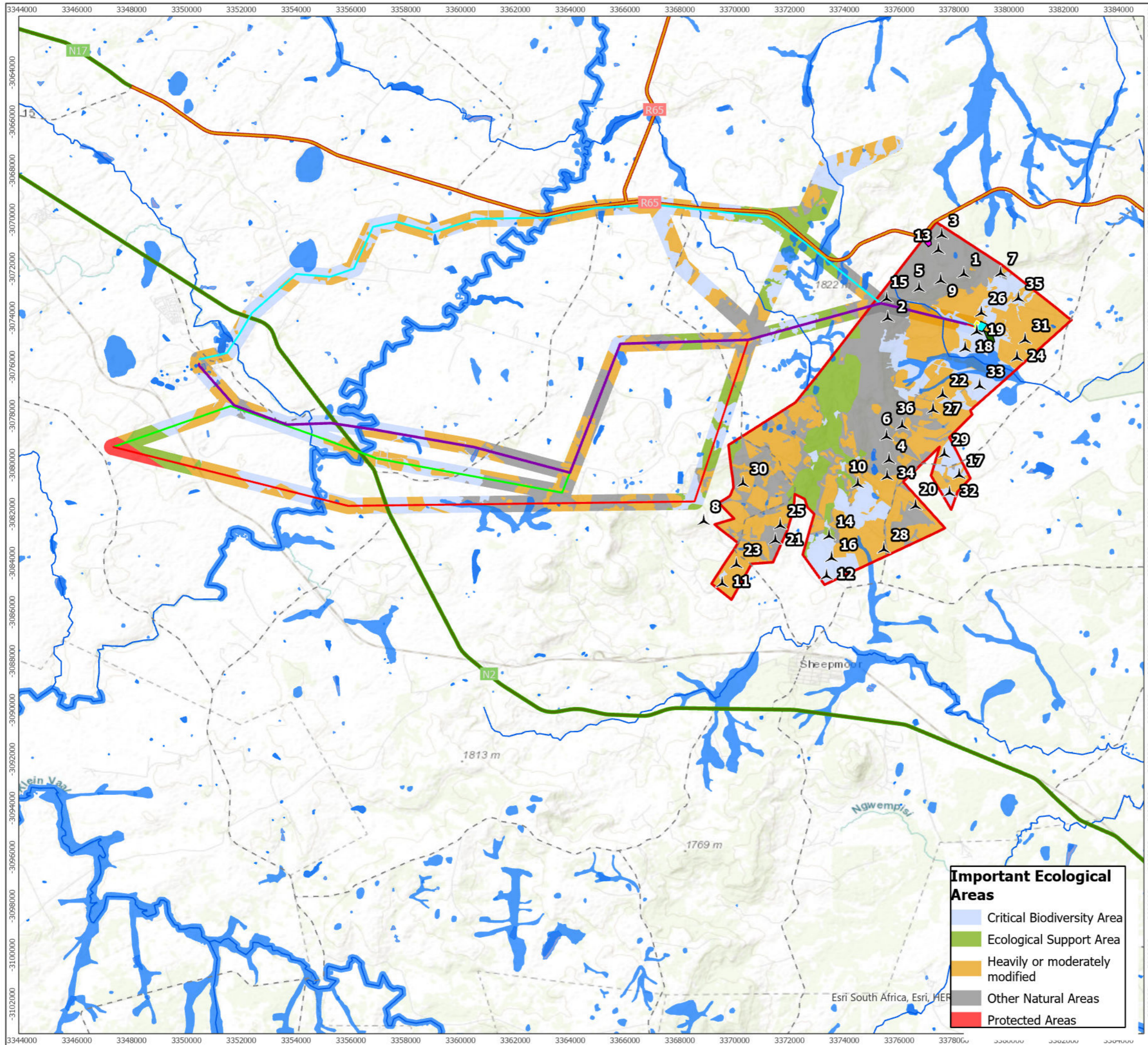
- ▭ Temporary Crops
- ▭ Transport
- ▭ Unconsolidated
- ▭ Village
- ▭ Artificial Waterbodies
- ▭ Consolidated
- ▭ Extraction Sites
- ▭ Fallow Lands & Old Fields
- ▭ Herbaceous Wetlands
- ▭ Industrial
- ▭ Natural Grassland

- ▭ Natural Waterbodies
- ▭ Natural Wooded Land
- ▭ Planted Forest
- ▭ Residential
- ▭ Surface Infrastructure
- ▭ Temporary Crops
- ▭ Transport
- ▭ Unconsolidated
- ▭ Village
- ▭ Waste & Resource Dumps



Produced By: KM	Ref: 0684401-GIS-005
Checked By: AA	Date: 6/9/2024

Land Use
Figure 5



Emvelo WEF Infrastructure

- ▲ Turbine Locations
- ▭ Emvelo WEF Boundary
- Associated Infrastructure Locations**
- ▭ Substation
- ▭ O&M Buildings
- ▭ Laydown Area (Preferred)
- ▭ Laydown Area (Alternative)
- Grid Connection Options**
- Preferred Grid Connection
- Alternative 2 Grid Connection
- Alternative 1 Grid Connection
- Alternative 3 Grid Connection

Wetlands

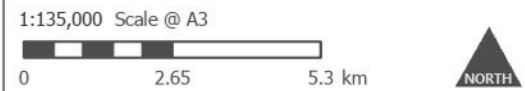
- NFEPA Rivers
- ▭ NFEPA Wetlands
- ▭ NBA Artificial Wetlands

Public Roads

- National Road
- Arterial Road
- - - Secondary Road

Important Ecological Areas

- ▭ Critical Biodiversity Area
- ▭ Ecological Support Area
- ▭ Heavily or moderately modified
- ▭ Other Natural Areas
- ▭ Protected Areas



Produced By: KM	Ref: 0684401-GIS-013
Checked By: AA	Date: 6/11/2024

Important Ecological Areas
Figure 6